



firewood rack



assembly instructions

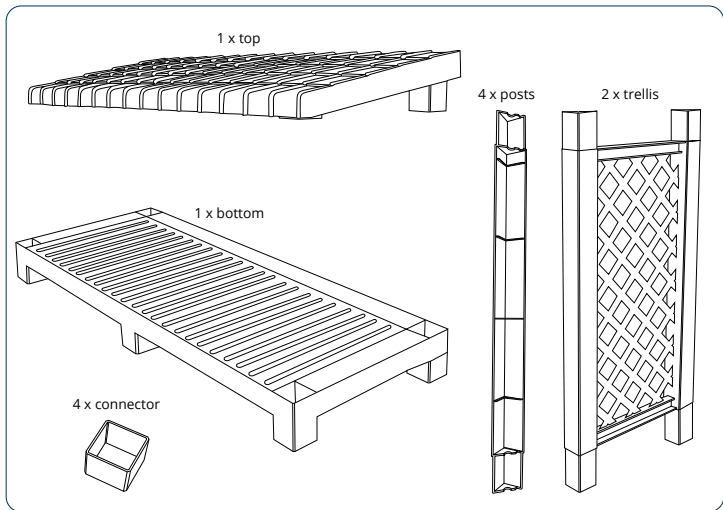
Thank you for choosing our firewood rack.

The firewood rack is made of **easy-care and weatherproof plastic** and is your **space-saving eye-catcher** for the balcony, terrace and small garden.

Below you will find the assembly instructions. The individual parts can be assembled in a **plug-in system** and do not require any tools.

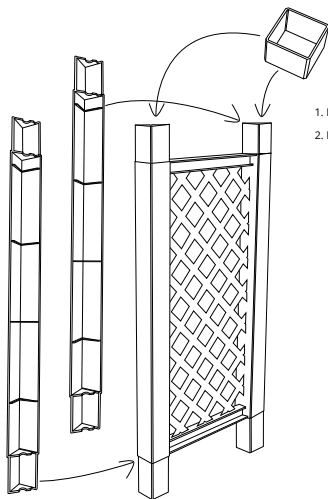
If you have any questions, please do not hesitate to contact us: service@khw-geschwenda.de

content



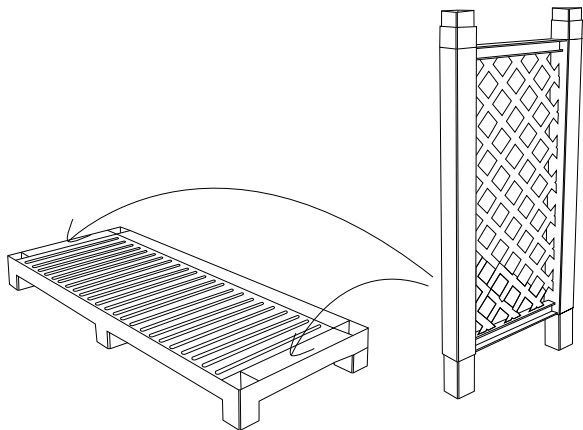
1

2 x

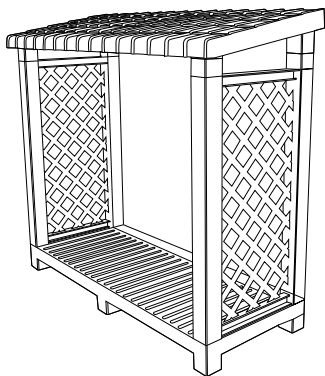
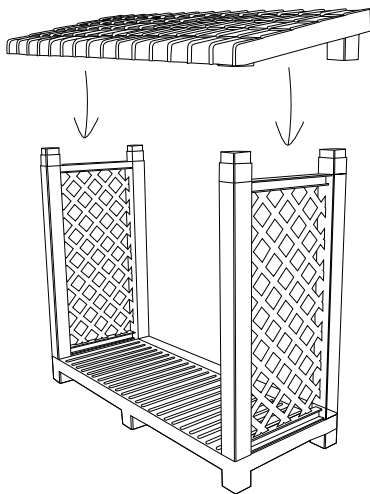


2

2 x



3



Store firewood properly

The place of storage

- Store the firewood **away from moisture**.
- The location should be **slightly sunny**.
- Keep some **distance** from a wall so air can circulate and **moisture can evaporate**.

Type and duration of storage

- **Thrown wood** dries faster than **stacked wood**, but therefore requires more space - a **combination of both variants** is ideal.
- Freshly made firewood should only be heaped up to a **certain degree of dryness**.
- If the wood is stored in **several rows** in front of each other, a **corresponding distance** makes sense here too.
- Firewood must be stored for at least **1-2 years** before it can be burned.

Size of the firewood

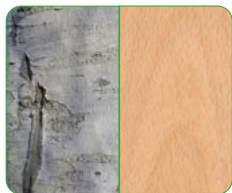
- **Different sizes** are ideal, which are **handy**.
- **Length** about 30 cm, **diameter** no more than 10 cm.



International version

To get the assembly instructions in another language **scan** the **QR code**.

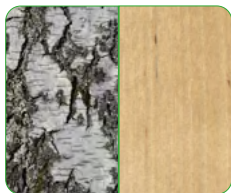
suitable firewood for heat retention (hardwood)



Beech

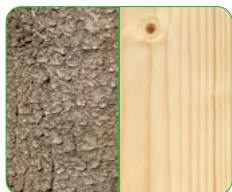


Oak



Birch

Suitable firewood for kindling (softwood)



Spruce



Larch



Pine

Are you familiar with ...
our
composter fits 340 liters?

For the sake of the environment, the thermal composter is made of **100 percent recycled plastic** and ensures a **fast composting process**. The finished compost can be removed from large openings on **each side**.





We are also the right partner in winter!

On a sled from our **Junior** series, even the youngest children can have fun in the snow.

Later on, the models from the **Classic** range ensure speedy descents on the toboggan slope.

The sledges from the **Adventure** range are an intense experience for young and old.

Our sleds are:

- made in Germany
- TÜV-tested
- free of harmful chemicals
- made of high-quality cold- and light-resistant plastic
- comfortable and ergonomic
- certified with the spiel gut seal*

follow us on



* this applies only to selected models



KHW Kunststoff- und Holzverarbeitungswerk GmbH
Alte Lage 1a · 99331 Geratal OT Geschwenda

Telefon +49 3 62 05 - 7 49-0
Telefax +49 3 62 05 - 7 49 34

info@khw-geschwenda.de
www.khw-geschwenda.de

Version 1 © 2022



#gemeinsampurenhinterlassen

 **Klimaneutral**
Druckprodukt
ClimatePartner.com/12518-1907-1001